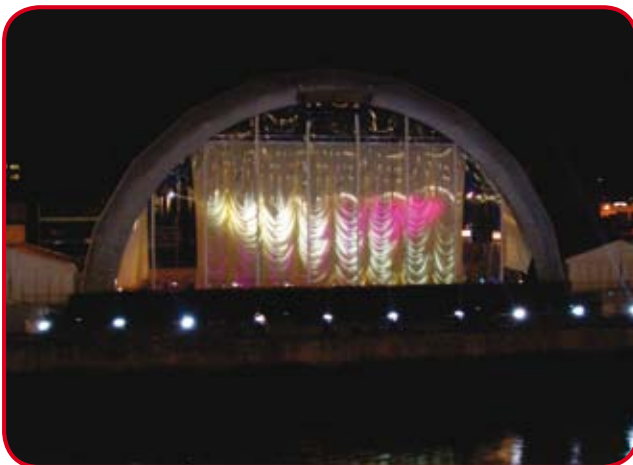
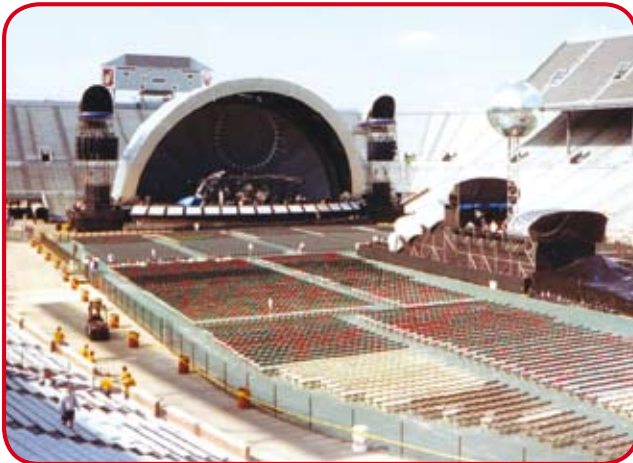


# GIANT ARCH

What's good for Pink Floyd could do the job for you.



## Properties

- **Span** : 40 m
- **Performance area depth** : modular from 4,75 to 28,5m
- **Floor height** : adjustable between 0,90 and 2,40 m
- **Clearance** : up to 16 m (at the top, floor at 2,4 m)
- **Roof Capacity (central area)** : 7.500 kg per arch, equally spread
- **Floor capacity** : 500 kg/m<sup>2</sup>
- **Originally designed for Pink Floyd :**

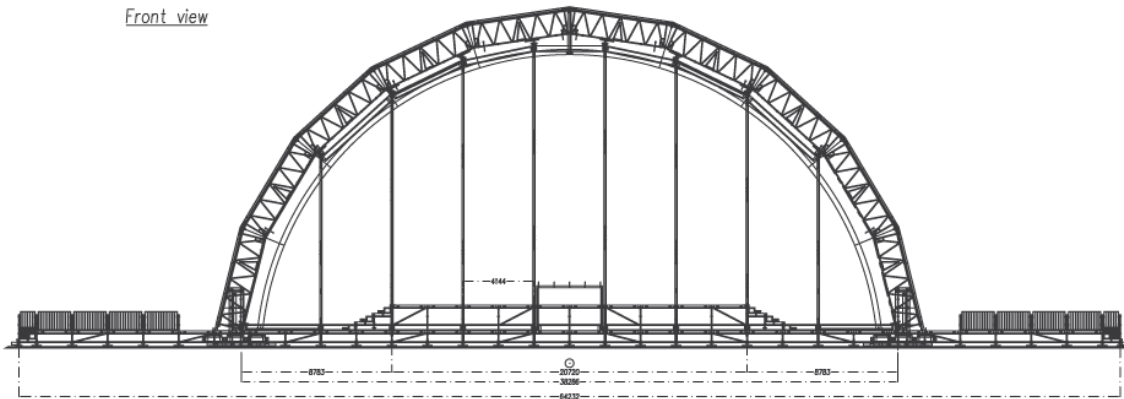
Due to its variable depth, this stage suits many different situations

# GIANT ARCH

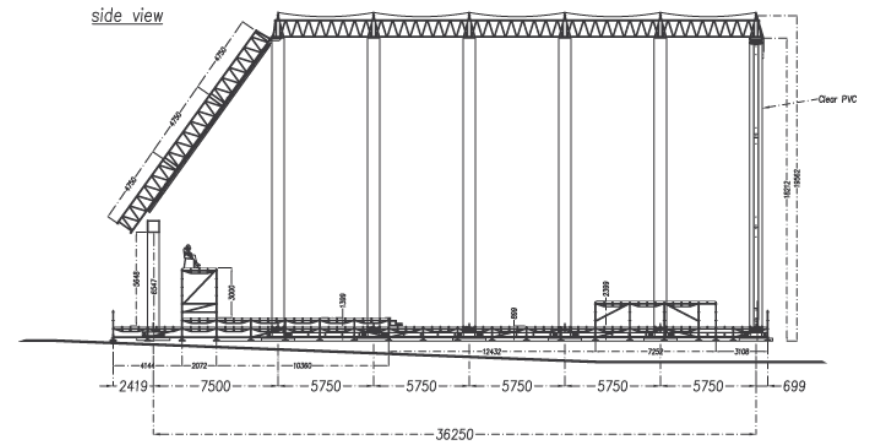
WWW.STAGECO.COM



front view



side view



plan-view

DOWNSTAGE

